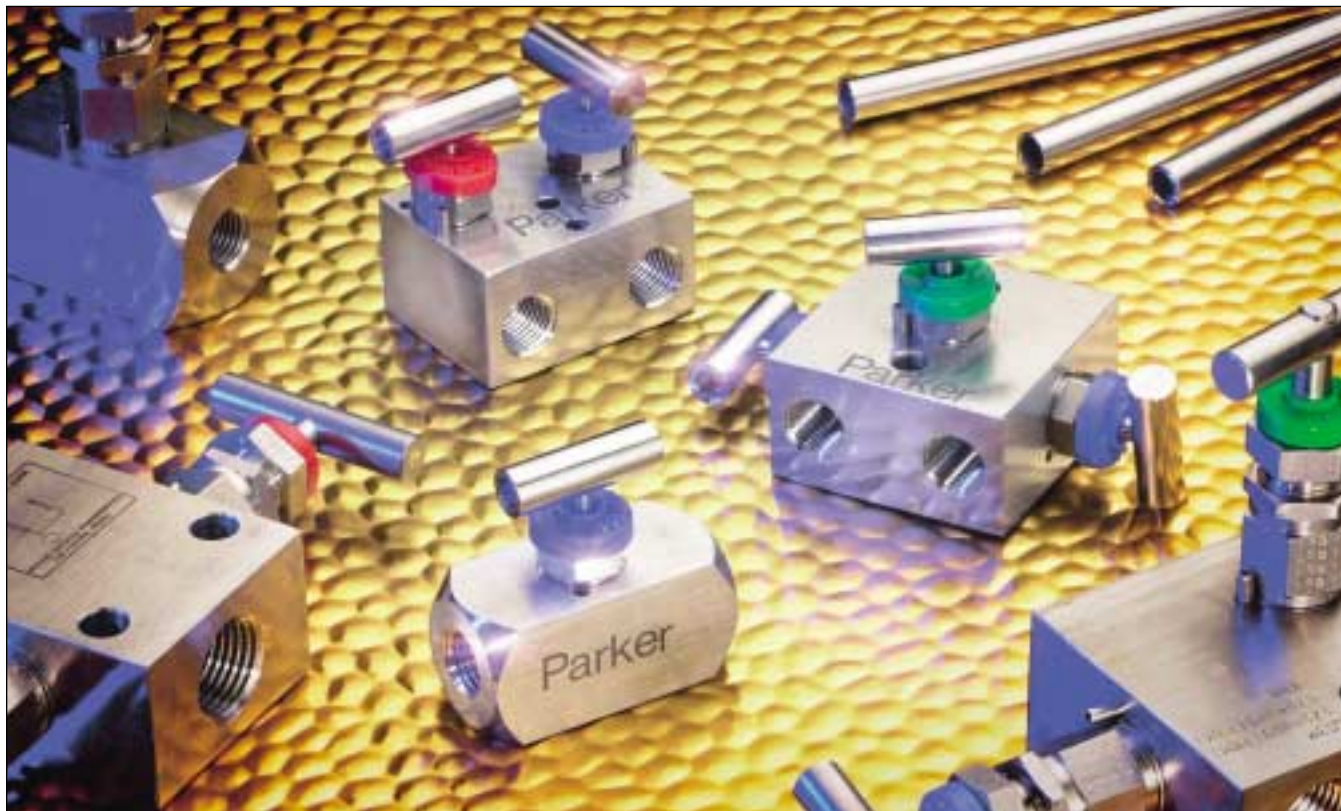


# High performance miniature valves and manifolds

Catalog 4190-MINI  
March 2001



## Easy to install, easy to operate and easy on the budget

Parker's range of miniature valves and manifolds are ideal for installation inside control panels and other size limited installations where **space** and **weight** are primary considerations. For additional space and weight saving, single valves can be supplied with integral bodies which incorporate tube fitting end connections. This means that the body of the valve and the end connections are a one-piece machined item.

## Size and weight comparison

### Conventional 1/4" needle valve

Length = 68mm (2.7")  
Height = 81mm (3.2")  
Weight = 0.269kg

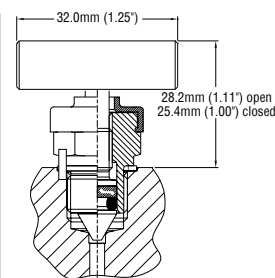
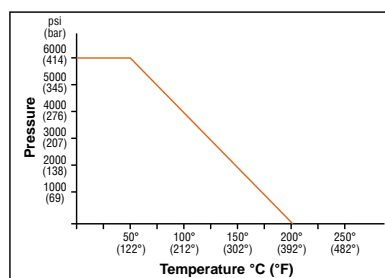


### Miniature 1/4" needle valve

Length = 68mm (2.7")  
Height = 54mm (2.1")  
Weight = 0.210kg



## Technical specification, pressure & temperature rating



**Performance:** working with any fluids this valve will provide bubble tight shut off. To avoid seat damage, applications should be provided with upstream filtering to remove any particle contamination.

The valve is designed with an anti-blow out proof stem and a metallic back seat to minimise atmospheric leakage in the event of stem seal failure. To reduce sealing ring wear, an anti extrusion P.T.F.E. back up ring is fitted as a standard.

Maximum pressure:  
Maximum temperature:  
See graph for P/T limitations  
Packing seal ring  
Back up ring  
Material of construction  
Seat construction

414 bar (6000 psi)  
204° C (400° F)  
Fluorocarbon Rubber  
P.T.F.E.  
316SS  
Metal/metal

# High performance miniature valves and manifolds

## Part numbers and dimensions

### Isolate Valves



MNVS4FF



MNVS4A



MNVSM6A



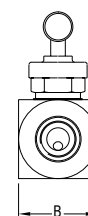
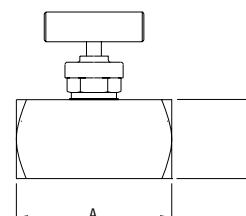
MNVS4M4F



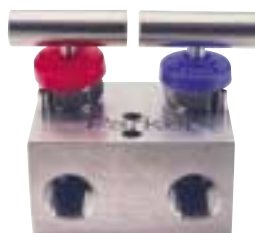
MANVS4M4F

Dimensions mm (inch)					
Part Number	Inlet	Outlet	A	B	C
MNVS4FF	1/4" NPT female	1/4" NPT female	51.0mm (2.0")	25.4mm (1.0")	25.4mm (1.0")
MNVS4A	1/4" O.D. A-LOK®	1/4" O.D. A-LOK®	68mm (2.7")	25.4mm (1.0")	25.4mm (1.0")
MNVSM6A	6mm O.D. A-LOK®	6mm O.D. A-LOK®	68mm (2.7")	25.4mm (1.0")	25.4mm (1.0")
MNVS4M4F	1/4" NPT male	1/4" NPT female	51.0mm (2.0")	25.4mm (1.0")	25.4mm (1.0")
MANVS4M4F	1/4" NPT male	1/4" NPT female	31.8mm (1.25")	31.8mm (1.25")	47.6mm (1.9")*

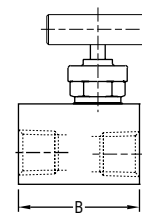
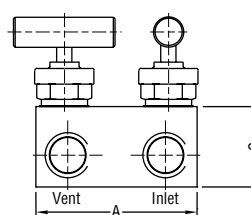
\*Dimension from bottom of male thread



### Two valve manifold



MLS2VTF4N

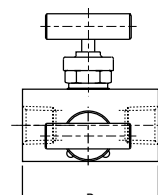
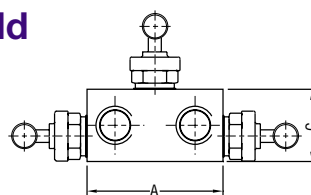


Dimensions mm (inch)						
Part Number	Inlet	Outlet	Drain/vent	A	B	C
MLS2VTF4N	1/4" NPT female	1/4" NPT female	1/4" NPT female	50.8mm (2.0")	38.1mm (1.5")	27.0mm (1.08")
MLS2VTF	1/2" NPT female	1/2" NPT female	1/4" NPT female	50.8mm (2.0")	50.8mm (2.0")	27.0mm (1.08")

### Three valve remote mount manifold



MLS3



Dimensions mm (inch)					
Part Number	Inlet	Outlet	A	B	C
MLS3V4N	2 - 1/4" NPT female	2 - 1/4" NPT female	50.8mm (2.0")	50.8mm (2.0")	27.0mm (1.08")

All dimensions are approximate and subject to change

Parker Hannifin provide a broad range of manifolds, the examples shown above are a few of the many styles that are produced. It will be possible to produce other manifold body arrangements, which can be fitted with this unique miniature design, and we would welcome enquiries for such requirements. Should you select a direct mount manifold, these will have mounting centres of 54 mm. Body design size reduction will therefore be limited due to the direct mounting dimensional considerations.



**Parker Hannifin plc**  
Instrumentation Products Division  
Riverside Road  
Pottington Business Park  
Barnstaple, Devon EX31 1NP  
England  
Phone: +44 (0)1271 313131  
Fax: +44 (0)1271 373636  
Email: manifolds@parker.com  
www.parker.com/IPD

**Parker Hannifin Corporation**  
Instrumentation Valve Division  
2651 Alabama Highway 21 North  
Jacksonville, AL 36265-9681  
Phone: 256 435 2130  
Fax: 256 435 7718  
www.parker.com/IVD